

Quickly layout and produce drawings for bending applications!

Ideal for use with A40/P two axis positioner.

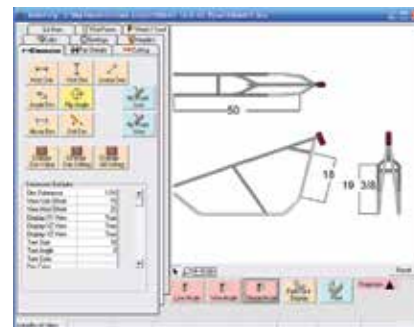


Part# **BENSW-SUPER**

Reduce layout cost

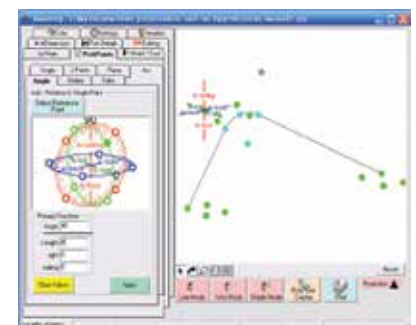
FEATURES

- Eliminate unnecessary material scrap
- Previous layout and design experience not required
- Mouse pick points allow dimension placement
- Dimension with decimals or fractions
- Save part program files for later use
- Information material data base included
- CLR or inside radius (adjustable for each bend)
- Create printable dimensioned model, shaded model, flat layout & title block
- Flat layout of cut length & bending locations
- Can be dimensioned from start of bend, end of bend & center of bend, or either direction
- Provides springback bend angle
- Print includes bending data such as bend angles, CLR or inside radius, rotation angle & bend order
- Preferences: color, text size & arrow size are saved in user definable data bases
- Verifies sufficient material is available for bending process
- Extra checking tools provided to verify part validity
- Allows multiple dies to be used on the same part
- Graphical layout interface provided
- Advanced LRA "Length, Rotation & Angle" design interface
- Powerful reverse engineering feature
- Inch to metric conversion
- CD-ROM Windows XP or higher required
- All standard Ercolina tooling included in tooling library
- LRA: transfers any part into XYZ data when entering LRA information into Custom Part interface; XYZ data available
- Railing Templates: includes hand railing template
- Chord measuring tool for large radius bending
- File Import/Export
- Estimating: Helps define project cost



Assembly Drawing

XYZ





Handrail Simulation Samples

Wall Rail

Material: 1¼" Schedule 40
Tooling: 1.660 Pipe R90
CLR: 3.5
Cal. CLR: 3.550
Cut Off Start End: 5.25
Cut Off Far End: 5.25

Shop Instructions:

Cut Length: 132 5/16

A	B	Location	Rotation	Angle	CLR
1	1	4 1/4	0	90	3.5
2	2	17 3/16 Flip	(-90)	32	3.5
4	3	128 1/16	(-90)	90	3.5
3	4	115 1/16	(-90)	32	3.5



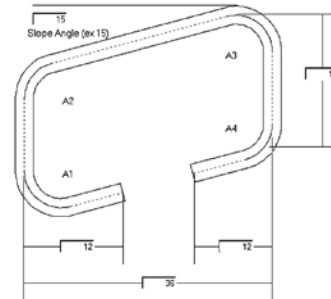
Design Instructions: Custom Part

Cut Length:

A	Length	Rotation	Angle	Type
1	2.5	0	90	Apex
2	12	-90	32	Apex
3	96	180	32	Apex
4	12	-90	90	Apex
E	2.5			

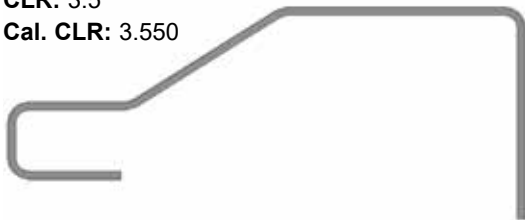
Bleacher

Material: 1¼" Schedule 40
Tooling: 1.660 Pipe R90
CLR: 3.5
Cal. CLR: 3.550



Handicap Rail

Material: 1¼" Schedule 40
Tooling: 1.660 Pipe R90
CLR: 3.5
Cal. CLR: 3.550



A	B	Location	Rotation	Angle	CLR
5	1	18 1/2	0	90	3.5
4	2	31	0	90	3.5
3	3	55 15/16	180	32	3.5
2	4	91 7/8	180	32	3.5
1	5	137 5/16	0	90	3.5

Design Instructions: Custom Part

Cut Length:

A	Length	Rotation	Angle	Type
1	42	0	90	Apex
2	48	0	32	Apex
3	36	0	-32	Apex
4	24	0	90	Apex
5	14	0	90	Apex
E	22			

Location Rotation Bend

Bend Number: 1 Location: 18 1/2 Rotation: 0 Bend Angle: 90			
Bend Number: 2 Location: 31 Rotation: 0 Bend Angle: 90			
Bend Number: 3 Location: 55 15/16 Rotation: 180 Bend Angle: 32			
Bend Number: 4 Location: 91 7/8 Rotation: 180 Bend Angle: 32			
Bend Number: 5 Location: 137 5/16 Rotation: 0 Bend Angle: 90			