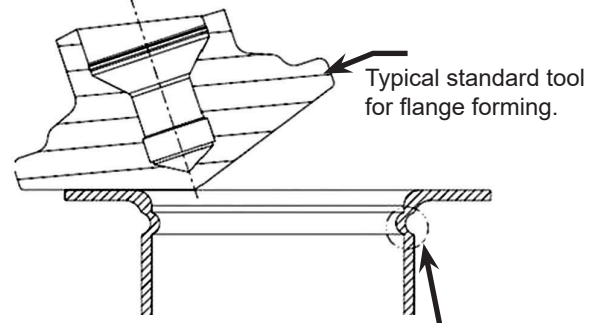




# Erco Flange EFB220

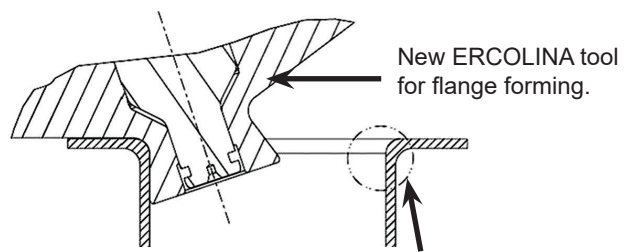
## Flanging Machine

### TRADITIONAL FORMING SYSTEM MOST USED BY COMPETITORS



Main defect: collapsing of material around flange collar. Reduced tube diameter results in flow restriction.

### ERCOLINA INNOVATIVE FORMING SYSTEM



Thickness of material in area of flange radius may be increased. Gain in material at flange radius improves structural integrity.



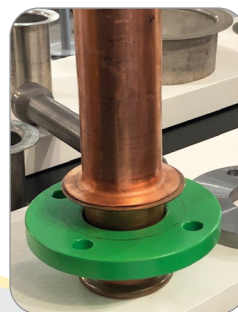
Part# EFB220 machine only



## Innovative Design Solves Flange Issues

### FEATURES

- 37° and 90° flanges
- 8" gas max capacity
- PLC control, 5.7" touch screen
- Extremely easy setup
- Quick-change tooling
- Efficient: 30% cost reduction
- Heavy duty cast iron structure
- Double conical tools avoid swelling and deformation
- Consistent quality results



Ercolina's EFB uniformly cold forms a variety of materials including stainless, steel, copper and aluminum to 90° flanges in tubes with maximum wall thickness of .1875".

The innovative forming process uses a series of double conical tools to avoid swelling and deforming the flange.

Greater accuracy with minimum deformation results in less post-forming operations and higher productivity.

The EFB is equipped with a PLC control with 5.7" touch screen to easily control settings and machine operation.

Three types of tools for capacity from 3/4" to 8 5/8".