



# ERCOLINA® HANDRAIL FABRICATION SYSTEM

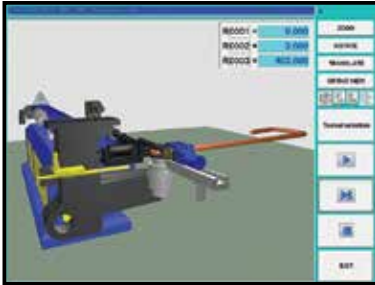
## Ercolina's handrail professional series package includes:

- Erco76 three axis CNC automatic bending machine
- 1-1/4" pipe schedule 40 set complete
- 1-1/2" pipe schedule 40 set complete
- 1-1/2" tube for .120 wall set complete
- Auto mandrel lubrication pump
- Bendtech software for external computer
- Machine training on-site



- Produce handrail to design in minutes
- Dramatically reduce operator handling and shop labor cost
- Improve quality to your customers providing mandrel quality bends in steel, stainless and aluminum
- Eliminate additional cost of weld elbows, material waste, weld, grind and finish operations
- Control your production time and process
- Quickly store and recall previous handrail programs
- Ercolina's tool set data files maintain machine start position enabling the operator to quickly change to the next job
- CNC control imports engineering files from CAD style software, or create your own data with included Bend-Tech software
- Professional on-site machine training included

# Interactive Touch Screen Control



GRAPHIC SIMULATION



PART LAYOUT



TOUCH SCREEN PROGRAMMING



MAIN SCREEN



BEND ANGLE & SPRINGBACK



STORE ALL TOOL SET INFORMATION



STORE MATERIAL INFORMATION

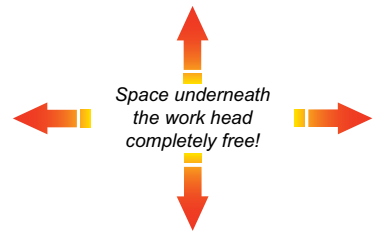
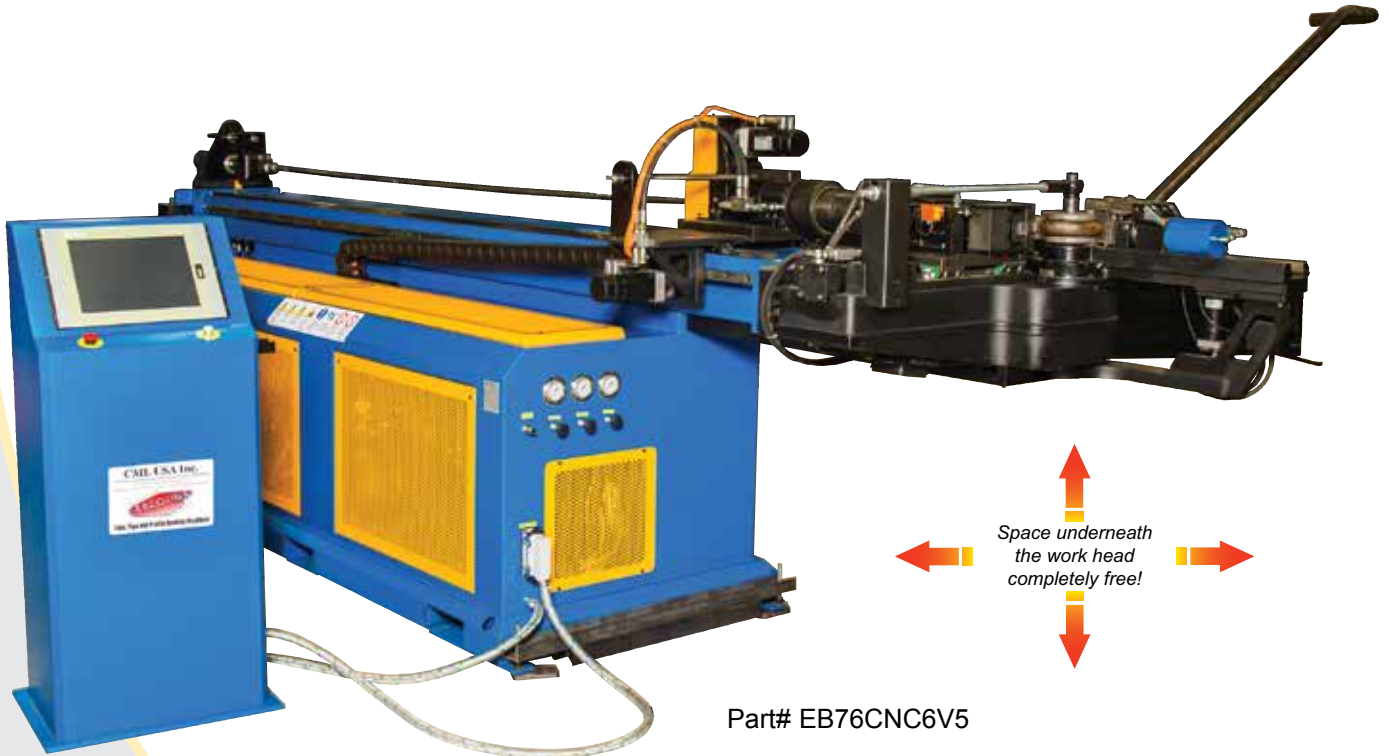
## Interactive CNC Control Available on these Models:

- ▶ Erco Bender 65
- ▶ Erco Bender 76
- ▶ GB90 Giga Bender
- ▶ GB100 Giga Bender
- ▶ GB130 Giga Bender
- ▶ GB200 Giga Bender



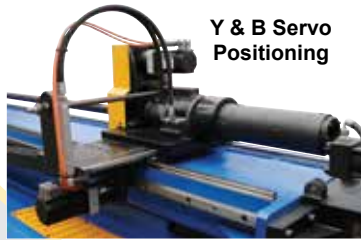
# EB65 & EB76 Erco Bender

## Automatic 3 Axis Mandrel Machines



Space underneath  
the work head  
completely free!

Part# EB76CNC6V5



Y & B Servo  
Positioning



## Fully Automatic – Cost Effective

### FEATURES

- Extended bending head capable of bending complex shapes and profiles
- Automatic or manual bend sequencing
- Independent pressure and clamp die adjustment
- Programmable carriage movement for tight radii
- Interactive touch screen with auto and manual operating modes, system diagnostics and multiple language capability
- Standard right hand bending direction
- Programmable material springback settings for each bend angle
- Programmable auto mandrel positioning allows operator to optimize extraction for improved bend quality
- Programmable tail stock interference zone monitors position and eliminates workhead collision
- USB for unlimited program memory storage and communication
- Hand-held remote bending control, certified class 3 safety and all electrical components UL, CSA and CE approved
- Graphic bend simulation software included

## EB65 & EB76 Capacities & Specifications

Model	EB65	EB76
Max. Tube Capacity – Mild Steel	2½" (.083 wall)	3" (.083 wall)
Stainless	2½" (.065 wall)	3" (.065 wall)
Square Tube		2" (.065 wall)
Max. Pipe Capacity	1½" Sch. 40	2" Sch. 40
Max. Bending Radius	9.8"	11.8"
Min. Bending Radius	1.5 x Ø	1.5 x Ø
Max. Shaft Rotation	210°	210°
Max. Bending Angle	185°	185°
Max. Tailstock Capacity	2½"	3"
Interactive Touch Screen Control	10" color screen	10" color screen
Max. Material Length – Standard table	13'	13'
Optional table	21'	21'
Minimum Underhead Swing Clearance	12"	12"
Length of Bending Head	59"	59"
Nominal Hydraulic Pressure	150 bar	150 bar
Maximum Carriage Travel	125"	125"
Number of Programs	Unlimited with USB	Unlimited with USB
Precision of Bend Angle	+/- .5°	+/- .5°
Bending Speed	Programmable	Programmable
Motor 480V 3ph at 50/60 Hz		
Dimensions (Height x Width x Length)	52" x 44" x 205"	52" x 44" x 205"
Weight	7,200 lbs.	7,400 lbs.

Contact CML USA for complete technical specifications.

All capacities based on mild grade materials; heavy wall and high tensile materials reduce machine capacity.

- Programmable internal mandrel lubrication (3 settings)
- High capacity with auxiliary hydraulic oil cooling
- Quick-change tooling system
- Standard 13' table, extension available
- Tail stock with through spindle accepts longer material
- Displays absolute (ABS) or incremental (INC) positioning with inch or metric readout
- Accepts YBC and XYZ input values
- Y - Feeding Electric Servo
- B - Rotation Electric Servo
- C - Bending Hydraulic CNC