

Rotary Draw Accessories

Spray Bending Lubricant

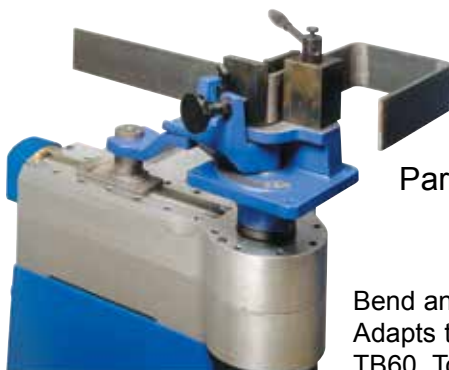


Part# 810
One (1) 12 oz. can

Part# 811
Case of Nine (9) 12 oz. cans



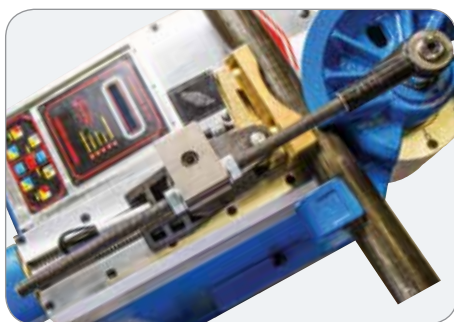
Profile Folding - Bending Attachment



Part# 051

Material Capacities	
Material	Maximum
Round solids	5/8"
Rectangular flat solids	3/16" x 4"
Solid square	5/8" x 5/8"
Angle Iron	2" x 5/16"

Bend and shape solid plate, bar stock and rod to tight radii. Adapts to Ercolina rotary draw benders: 030 Mega Bender, TB60, Top Bender Plus, SB48 and Super Bender Plus.



Tie Bar Accessory

Part# 030TIEBAR

For use on 030 Mega Bender, TB60, Top Bender Plus, SB48 and Super Bender Plus.

Tie bar accessory should always be used when bending heavy wall profiles and solid materials.

Roller Counterbending Dies



Part# 050I
from 3/8" to 2 3/8"

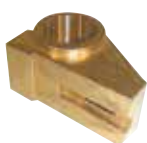
Part# 050J
from 2 1/2" to 3"

**MUST SPECIFY
MATERIAL DIAMETER
WHEN ORDERING**

Available for round and square profiles, roller dies are recommended when bending high tensile materials, solids and heavy wall profiles.

Note: Roller dies must be positioned a minimum of 2 1/2" from face of center former; failure to do so will cause machine damage. Not suitable for bends beyond 130°.

Counterbending Die Support



Part# 050E
(replaces standard vise)

Required when bending radii 225mm and larger.
(Not required for TB100/TB130/TB180.)